



PxAqua 6
SH 12V

Product description

PxAqua 6 LED lamp 12V SH is designed for underwater lighting. It can also be used to illuminate the interior and exterior architectural details.

The lamp uses six high-power LEDs from OSRAM Oslon. The LEDs are available in 3 different color temperatures: cold white, warm white or neutral white. The lamp may be provided with optics of lighting beam angles 10°, 25° (standard), 50° or elliptical 35°x12°. The casing is made of stainless steel (316L), and provides protection class IP68.

The device is provided with a two-meter cable.

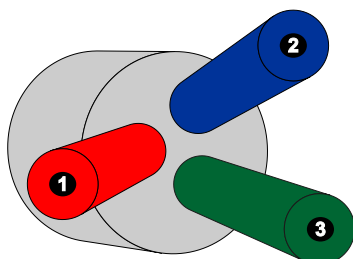
The PX373 may only be powered from 12V or 24V DC using voltage LED drivers or voltage power supply. In case of using a voltage driver e.g. PX254, PX282 or PX370, it is possible for dimming of this product.

Technical data

Type:	PX373
Number of LEDs:	6
Power supply:	12-24 V DC
Current consumption:	max. 0,6 A (for 12V DC) max. 0,3 A (for 24V DC)
International Protection Marking:	IP68
Casing material:	stainless steel (316L)
CRI:	≥ 80
Lenses beam angle:	25° (typical), 10°, 50°, EL-35°x12°(on order)
Available LEDs colors:	white warm, white cold, white neutral
Brightness (25° at 1 m dist.):	2500 lx
Weight:	0,77 kg
Dimensions:	diameter: 84 mm height: 27 mm height with the case foot: 91 mm

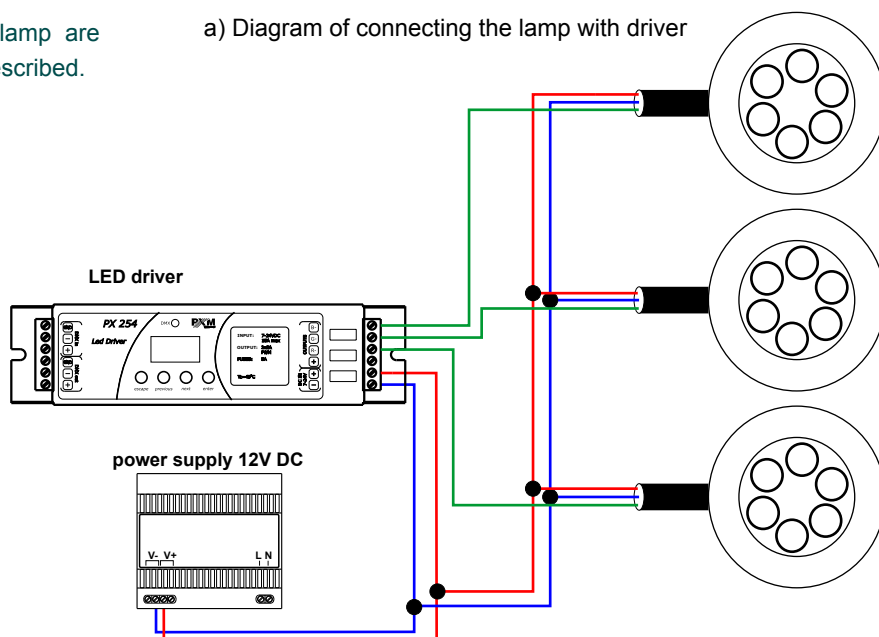
Connection of cables

The possible colors of the wires used in the lamp are presented below. Wiring should be connected as described. Lamps may only be connected in parallel.

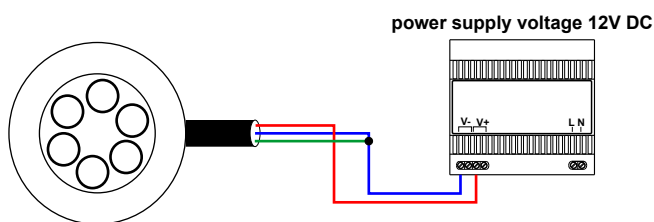


- ❶ + (red)
- ❷ - (blue)
- ❸ PWM (green)

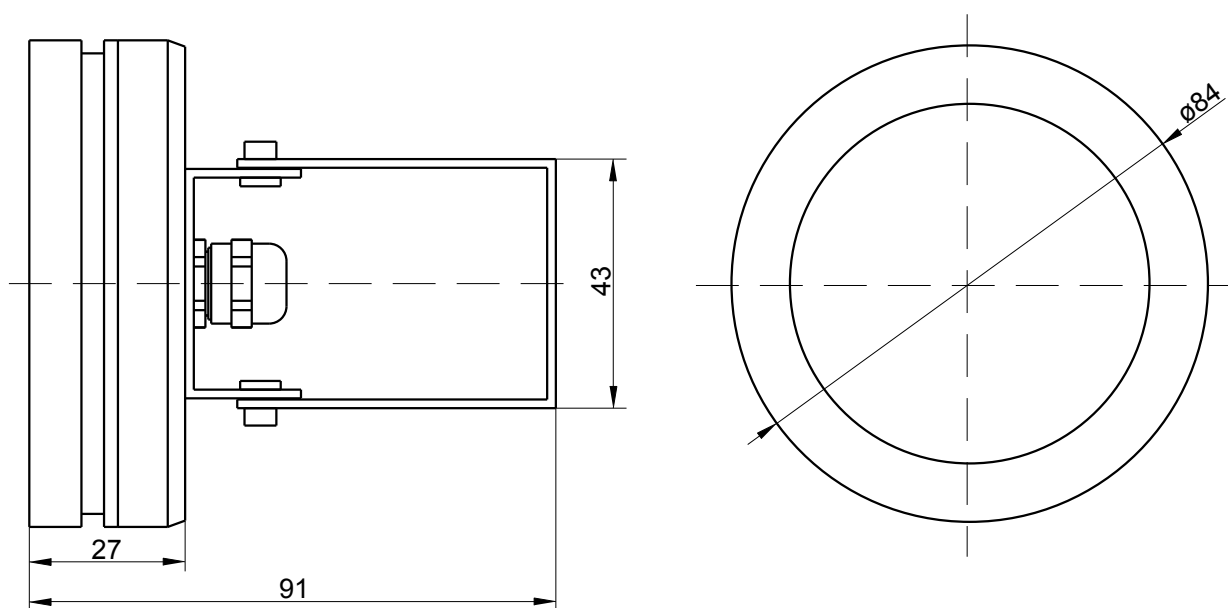
a) Diagram of connecting the lamp with driver



b) Diagram of connecting the lamp with power supply



Technical drawing



Caution!!!

When installing the lamp, be sure of leaving enough space for cable gland, from which comes out the power cord.