



PxLine Mini

General description

PxLine Mini is a LED lamp designed for exposition lighting and architectural details illumination.

It is the smallest of the PxLine series lamps. The product does not have a built-in DMX driver or power supply. The lamp is used in systems that require a uniform, constant light.

The PX294 uses efficient LEDs that provide a variety of color options and allow to achieve different levels of brightness. It is available with 6, 12 or 18 LEDs (depending on version) supplied with 12V DC voltage external power supply. The device is manufactured in several versions with different colors of light emitted: cool white, neutral white and warm white. In addition, a minimalist look of the housing makes it ideal for all types of interior and exposure lighting. The maximum power of the entire lamp PX294 is 24 W for the 18 LEDs version. Each version can be equipped with optics beam angles of 16, 23, 45 degrees or elliptical lenses.

The standard lamp is equipped with a cable length of 2m. Mounting of the lamp is sold separately and designed in accordance with customer requirements.

Technical data

catalog number:	PX294
number of LEDs:	6, 12 or 18
type of LEDs:	LUXEON Rebel
beam angles:	16°, 23°, 45°, EL(elliptical 45x20°)
available colors of light:	white warm, cold or neutral
control:	outside DXM controller
power supply:	12V DC (outside power supply)
max. power consumption:	24 W (for 18 LEDs version), 16 W (for 12 LEDs version), 8 W (for 6 LEDs version),
housing material:	aluminum
brightness (at 1m distance)	1850 lumens (for 18 LEDs and 23° lens version) 1130 lumens (for 12 LEDs and 23° lens version) 500 lumens (for 6 LEDs and 23° lens version)
casing material:	IP 42
weight:	0,7 kg (for 18 LEDs version)
dimensions (without handle):	length: 955 mm (for 18 LEDs version) diameter: 24 mm

Additional information

Below You will find description of the PX 294 model designations and their explanation.

① ② ③
PX294-XX-YYY-ZZ

1. XX - beam angle. Available values:
 - 16 - 16°
 - 23 - 23°
 - 45 - 45°
 - EL - elliptical (45°x 20°)
2. YYY - LEDs colors.
 - C - white cold
 - N - white neutral
 - W - white warm
3. ZZ - number of LEDs:
 - 6 - 6 LEDs (length 35,5 cm)
 - 12 - 12 LEDs (length 65,5 cm)
 - 18 - 18 LEDs (length 95,5 cm)

Example of lamp designation:

PX294 - 40 - NNN - 12

Short handle

To be mounted on the wall, allows to illuminate the horizontal surface near the wall. Power cable is supplied in a recess in the handle. It is possible to mask the cable.



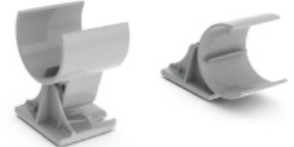
Long handle

Ideal for illuminating images and boards. Cable entry is recessed in the arm. It is possible to mask the cable.



Moving handle

Allows you to adjust the angle of incidence light in the range from 0 to 180



Technical drawing

