

419 CONNECTOR

Features and Benefits:

- rugged aluminum alloy shells, long lasting
- non conductive black finish
- IP67 dust and waterproof protection
- monopiece backshell
- available with PG29 or PG36 gland
- 7 leading earth contacts for make first / break last
- available with solder or crimp contacts
- wire size AWG10 - 5.1mm² max

- operating voltage: 400V
- working current: 25A
- number of pins: 19



Female receptacle
9202419E00S02



Male receptacle with coupling nut
9209419AR0S02



Cable size	Female in line	Extended female in line	Straight male plug	Extended straight male plug
PG29 cable ø11-20mm	9201419E00SA2	9203419E00SA2	9206419AR0SA2	9207419AR0SA2
PG29 cable ø11-20mm, with grub screw	9201419E00SA2090	9203419E00SA2090	9206419AR0SA2090	9207419AR0SA2090
PG29 cable ø14-25mm	9201419E00SB2	9203419E00SB2	9206419AR0SB2	9207419AR0SB2
PG29 cable ø14-25mm, with grub screw	9201419E00SB2090	9203419E00SB2090	9206419AR0SB2090	9207419AR0SB2090
PG36 cable ø22-32mm	9201419E00SD2	9203419E00SD2	9206419AR0SD2	9207419AR0SD2
PG36 cable ø22-32mm, with grub screw	9201419E00SD2090	9203419E00SD2090	9206419AR0SD2090	9207419AR0SD2090

ENTERTAINMENT

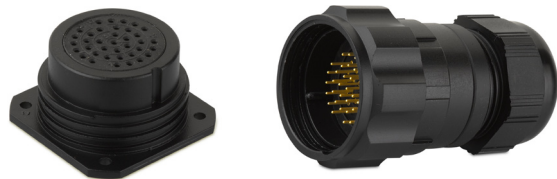
Audio - multi pair-connectors



12 pins / 4 pairs



22 pins / 6 pairs



37 pins / 12 pairs



Hybride DMX + Power - connector



3 Pins 25 A + 3 pins 10 A

Power - connectors



3 Pins connector 25 A

Hoist - connector



7 Pins 25 A



5 Pins connector 80 A

