

PX725

Keyboard Hub

MANUAL



TABLE OF CONTENTS

1. General description.....	3
2. Safety considerations.....	3
3. Description of the connectors.....	4
4. Indication lights.....	5
5. Work of the device.....	5
6. Connection scheme.....	6
7. Dimensions.....	7
8. Technical data.....	7
Declaration of conformity.....	8

The manufacturer reserves the right to change the operation and handling of the device in order to improve the product.

PXM Marek Żupnik spółka komandytowa
Podłęże 654
32-003 Podłęże

tel.: (12) 385 83 06
fax: (12) 626 46 94
E-mail: info@pxm.pl
Internet: www.pxm.pl

1. GENERAL DESCRIPTION

The module supports the bus of the keypads attached to PX340 and PX710M

PX725 Keyboard Hub is a device which connects the controller PX340 and PX710M with the additional input modules PX723 Keyboard 8 and PX734 Light & movement sensor. The connector has two independent buses, to which max. 32 input modules each can be connected in series (in total max. 64 modules).

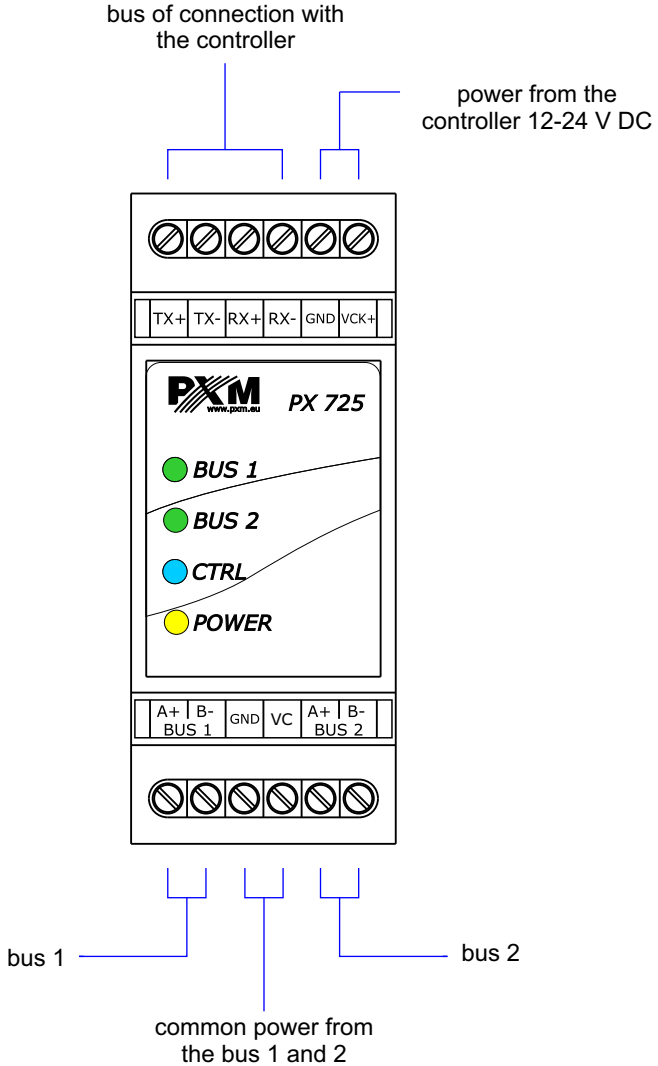
The configuration of additional devices is from the level of the PxDesigner application.

2. SAFETY CONDITIONS

PX725 is a device powered with safe voltage 12-24 V; however, during its installation and use the following rules must be strictly observed:





1. The device can be connected to 12-24 V DC (stabilised voltage) with current-carrying capacity compatible with technical data.
2. All the conductors should be protected against mechanical and thermal damage.
3. In case of damage to a conductor, it should be replaced with a conductor of the same technical parameters.
4. Connection of DMX signal can be made with a shielded conductor only.
5. All repairs, connecting and disconnecting of cables can only be made with cut off power supply.
6. The device should be strictly protected against contact with water and other liquids.
7. All sudden shocks, particularly dropping, should be avoided.
8. The device cannot be turned on in places with humidity exceeding 90%.
9. The device cannot be used in places with temperature lower than +2°C or higher than +40°C.
10. Clean with damp cloth only.

3. DESCRIPTION OF THE CONNECTORS



4. WORK OF THE DEVICE

Hub is equipped with 4 indicators signalling:

Indicator	Action	Function
Yellow  POWER	permanent light	a device works correctly
Blue  CTRL	flash	communication established between the controller and PX725
	it does not light	no communication with the controller
2x green  BUS 1  BUS 2	they flash independently	PX725 emits and receives packages on the given line

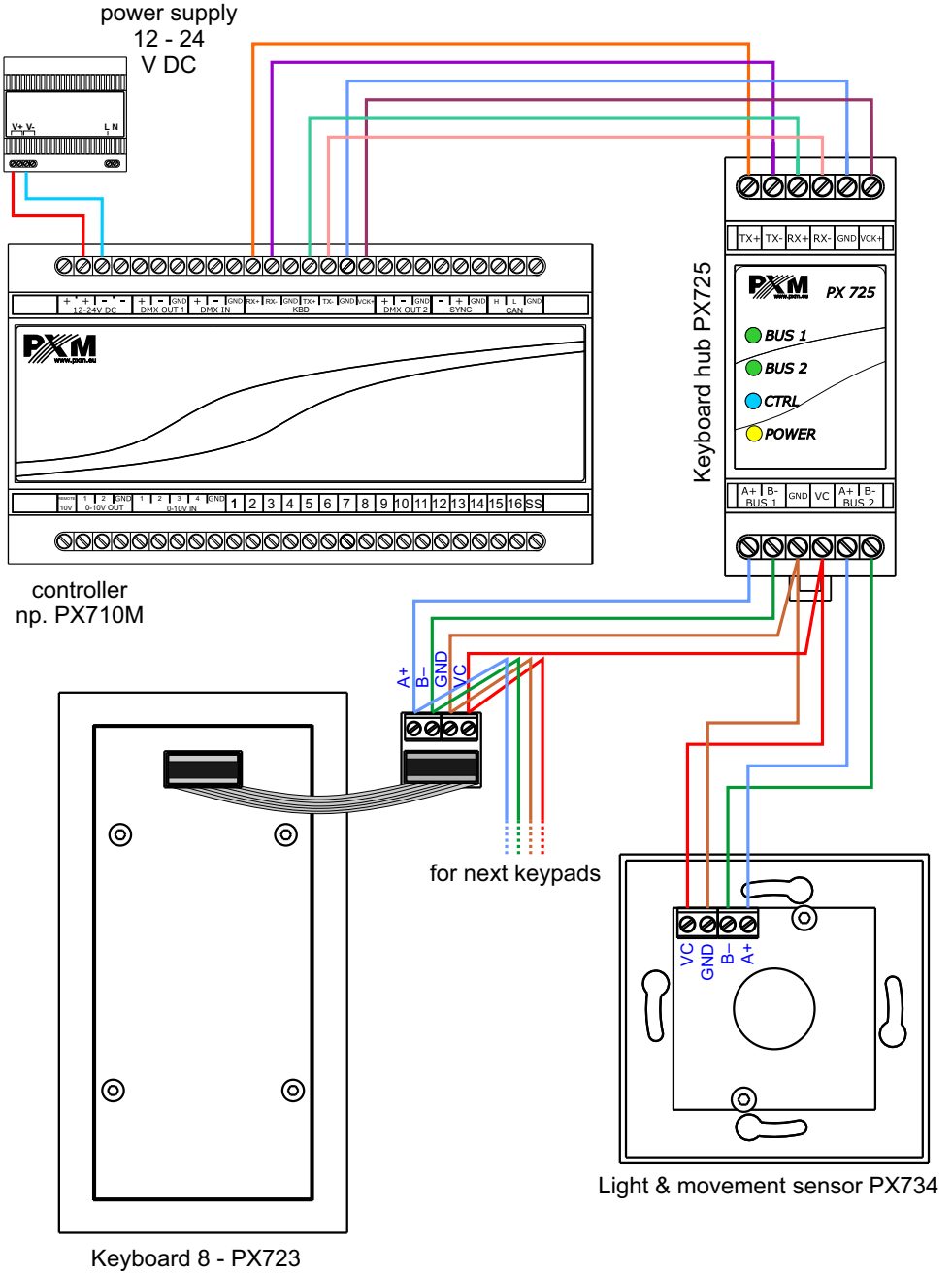
5. WORK OF THE DEVICE

Hub PX725 is a device managing communication between the controller and ballasts. It realizes the procedure of finding ballasts and transfers commands from the controller to them as well as cyclically asks about their state.

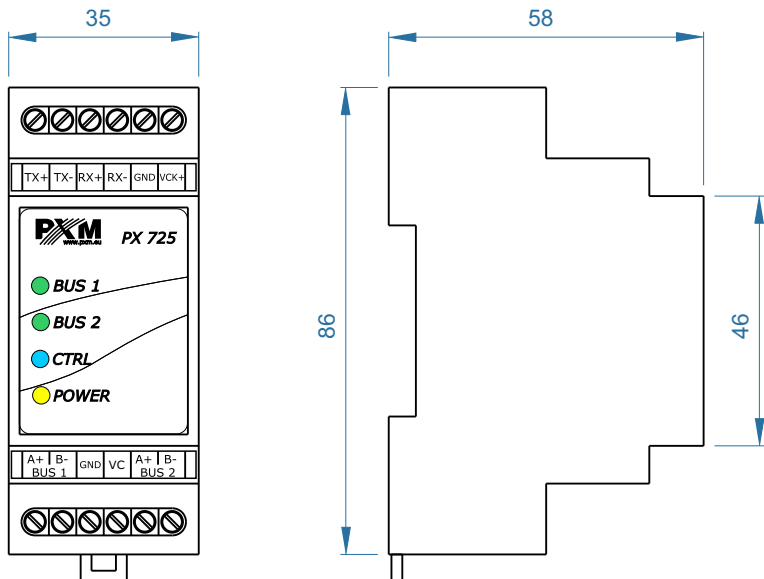
The ballast is a final device on the bus. It can be, for instance, the keypad with the buttons (PX723), the slider, the light sensor (PX734), etc.

The configuration of PX 725 and the ballasts connected to it is operated with the use of the PxDesigner program. The description of the configuration has been put in the manual of the program, which is on the producer's website.

6. CONNECTION SCHEME

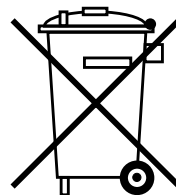


7. DIMENSIONS



8. TECHNICAL DATA

Power supply:	from controller
Maximum number of the devices:	64 (max. 32 na jedną magistralę PX725)
Method of programming:	with the use of PxDesigner
Method of communication with the controller:	PX710M, PX340
Weight:	0,15 kg
Dimensions:	length: 86 mm width: 35 mm height: 58 mm





Podłęże 654
32-003 Podłęże

tel: 012 385 83 06
fax: 012 626 46 94

e-mail: info@pxm.pl
http://www.pxm.pl

DECLARATION OF CONFORMITY

PXM Marek Żupnik spółka komandytowa
Podłęże 654, 32-003 Podłęże

declares under our sole responsibility that the product:

Name of product: **Keyboard HUB**
Type: **PX 725**

compiles with the following standards and harmonized standards:

PN-EN 50581:2013-03,	EN 50581:2012
PN-EN 61000-4-2:2011,	EN 61000-4-2:2009
PN-EN 61000-6-1:2008,	EN 61000-6-1:2007
PN-EN 61000-6-3:2008,	EN 61000-6-3:2007

and is in conformity with the provisions of the following EC Directives:

2011/65/UE DIRECTIVE OF THE EUROPEAN PARLIAMENT AND OF THE COUNCIL of 8 June 2011 on the restriction of the use of certain hazardous substances in electrical and electronic equipment Text with EEA relevance.

2014/30/UE DIRECTIVE OF THE EUROPEAN PARLIAMENT AND OF THE COUNCIL of 26 February 2014 on the harmonisation of the laws of the Member States relating to electromagnetic compatibility (recast) Text with EEA relevance.



Marek Żupnik spółka komandytowa
32-003 Podłęże, Podłęże 654
NIP 677-002-54-53

Podłęże, 06.03.2018

mgr inż. Marek Żupnik.