

**Keyboard hub****Device description**

The module supports the bus of the keypads attached to **PX340** and **PX710M**

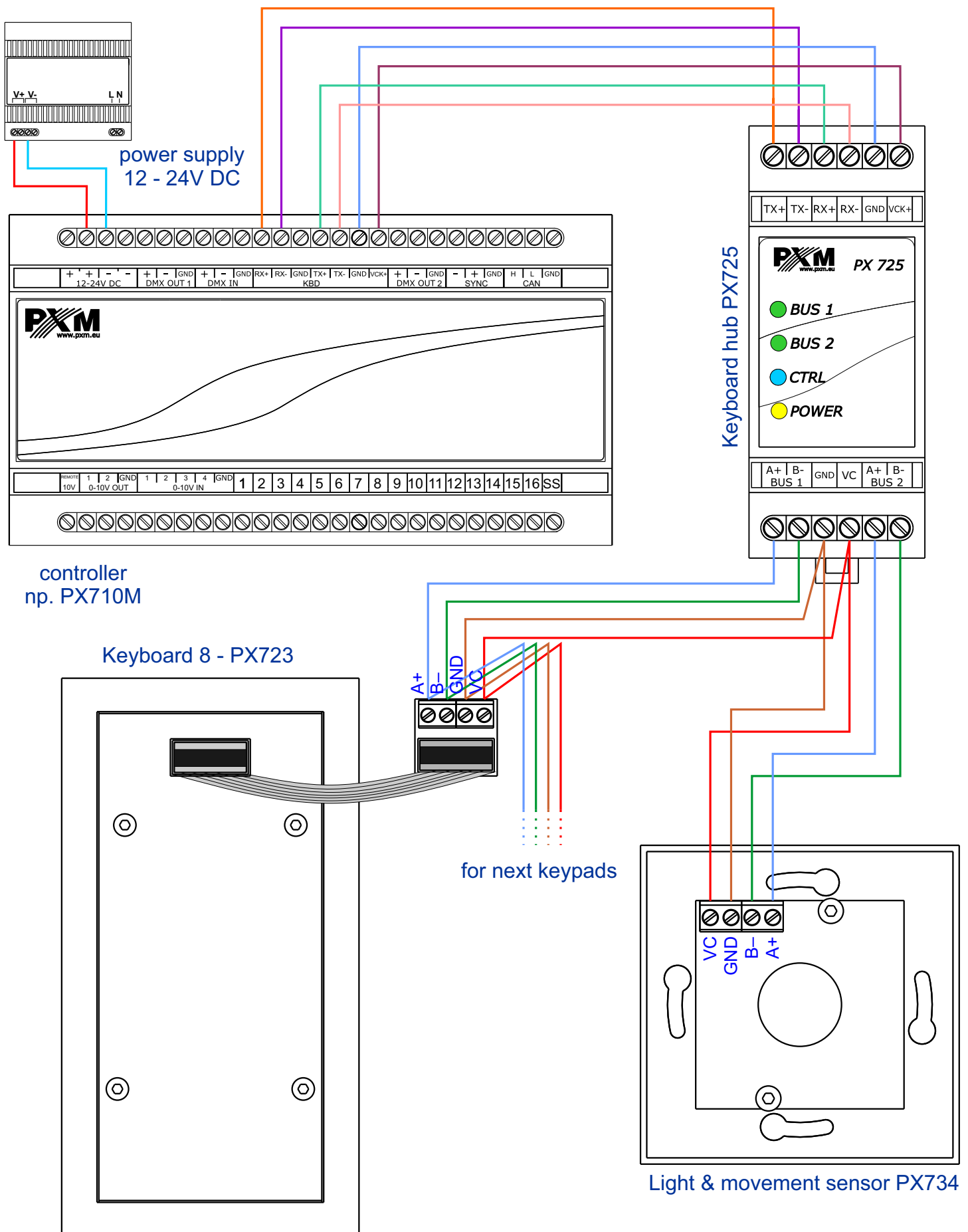
PX725 Keyboard Hub is a device which connects the controller PX340 and PX710M with the additional input modules PX723 Keyboard 8 and PX734 Light & movement sensor. The connector has two independent buses, to which max. 32 input modules each can be connected in series (in total max. 64 modules).

The configuration of additional devices is from the level of the PxDesigner application.

Technical data

Power supply:	from controller
Maximum number of the devices:	64 (max. 32 for one line PX725)
Method of programming:	with the use of PxDesigner
Method of communication with the controller:	PX710M, PX340
Weight:	0,15 kg
Dimensions:	length: 86 mm width: 35 mm height: 58 mm

Connection scheme



Technical drawing

