

PX723

Keyboard 8

MANUAL



CONTENTS

<u>1. General description.....</u>	<u>3</u>
<u>2. Safety conditions.....</u>	<u>3</u>
<u>3. Description of the connectors and the numbers of buttons.....</u>	<u>4</u>
<u>4. Device operation.....</u>	<u>5</u>
<u>5. Connection scheme.....</u>	<u>6</u>
<u>7. Dimensions.....</u>	<u>7</u>
<u>8. Technical data.....</u>	<u>8</u>
<u>Declaration of conformity.....</u>	<u>9</u>

The manufacturer reserves the right to change the operation and handling of the device in order to improve the product.

1. GENERAL DESCRIPTION

PX723 the dedicated keypad for cooperation with the controllers PX710M and PX340

It is possible to create the system of additional inputs for the controllers PX710M and PX340, which will include the devices PX723, PX734.

PX723 expands the system by 8 digital inputs in the form of touch buttons and PX734 expands it by one analogue input

and one digital input (the movement sensor and the analogue light sensor).

Both devices are connected with the use of the connector PX725.

Each button of PX723 has a LED indicator with specific brightness. Its state is controlled by the controller, and the configuration is carried out with the use of the program PxDesigner (available for free on the producer's website). Moreover, pressing the button can be signalled with the short acoustic signal.

It is possible to connect 64 devices (max. 32 per one line of PX725) and they should be connected in series.

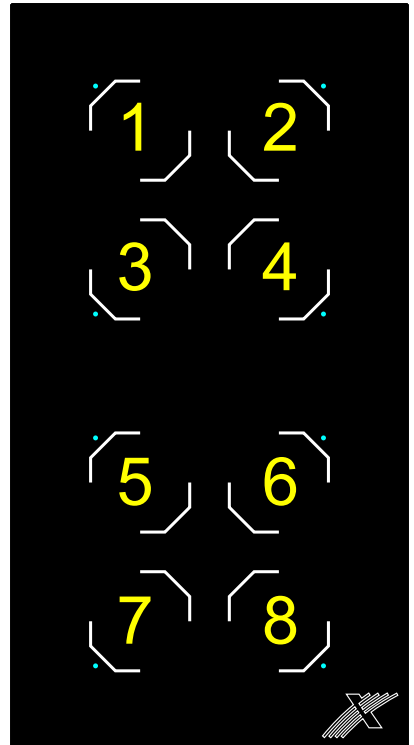
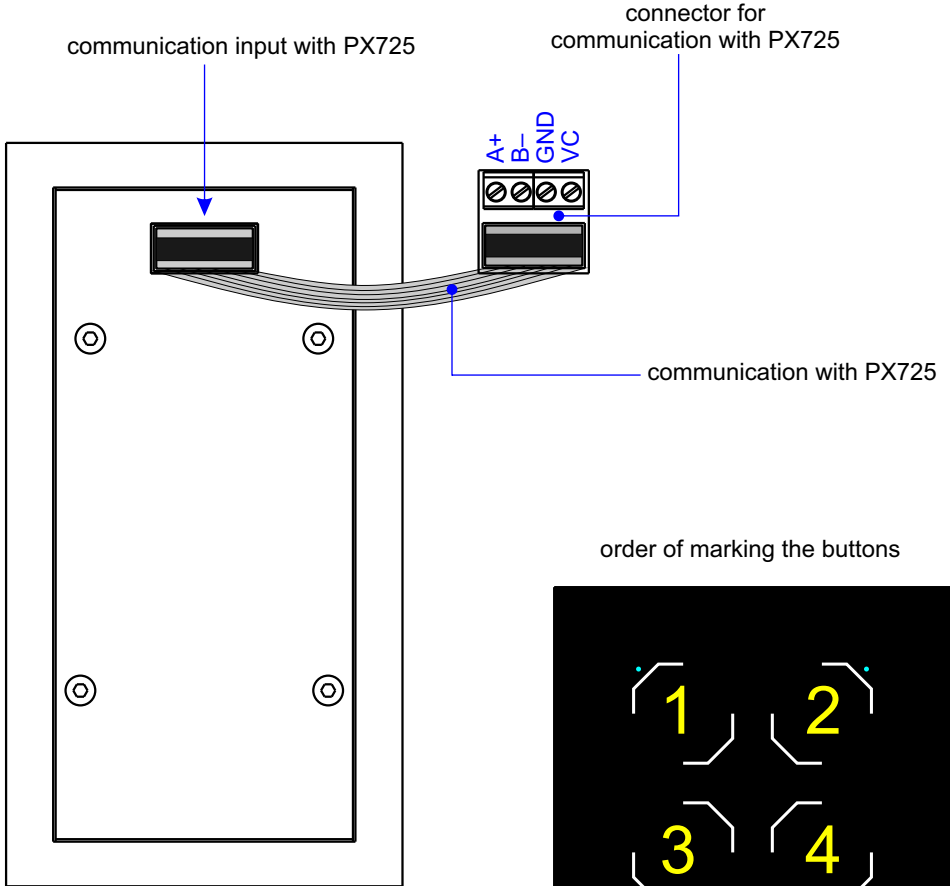
The housing of PX723 enables an easy assembly in the standard double electrical box. The front panel is made with tempered glass.

2. SAFETY CONSIDERATIONS

PX723 is a device powered with safe voltage 12-24 V; however, during its installation and use the following rules must be strictly observed:

1. The device can be connected to 12-24 V DC (stabilised voltage) with current-carrying capacity compatible with technical data.
2. All the conductors should be protected against mechanical and thermal damage.
3. In case of damage to a conductor, it should be replaced with a conductor of the same technical parameters.
4. Connection of DMX signal can be made with a shielded conductor only.
5. All repairs, connecting and disconnecting of cables can only be made with cut off power supply.
6. The device should be strictly protected against contact with water and other liquids.
7. All sudden shocks, particularly dropping, should be avoided.
8. The device cannot be turned on in places with humidity exceeding 90%.
9. The device cannot be used in places with temperature lower than +2°C or higher than +40°C.
10. Clean with damp cloth only.

3. DESCRIPTION OF THE CONNECTORS AND THE NUMBERS OF BUTTONS



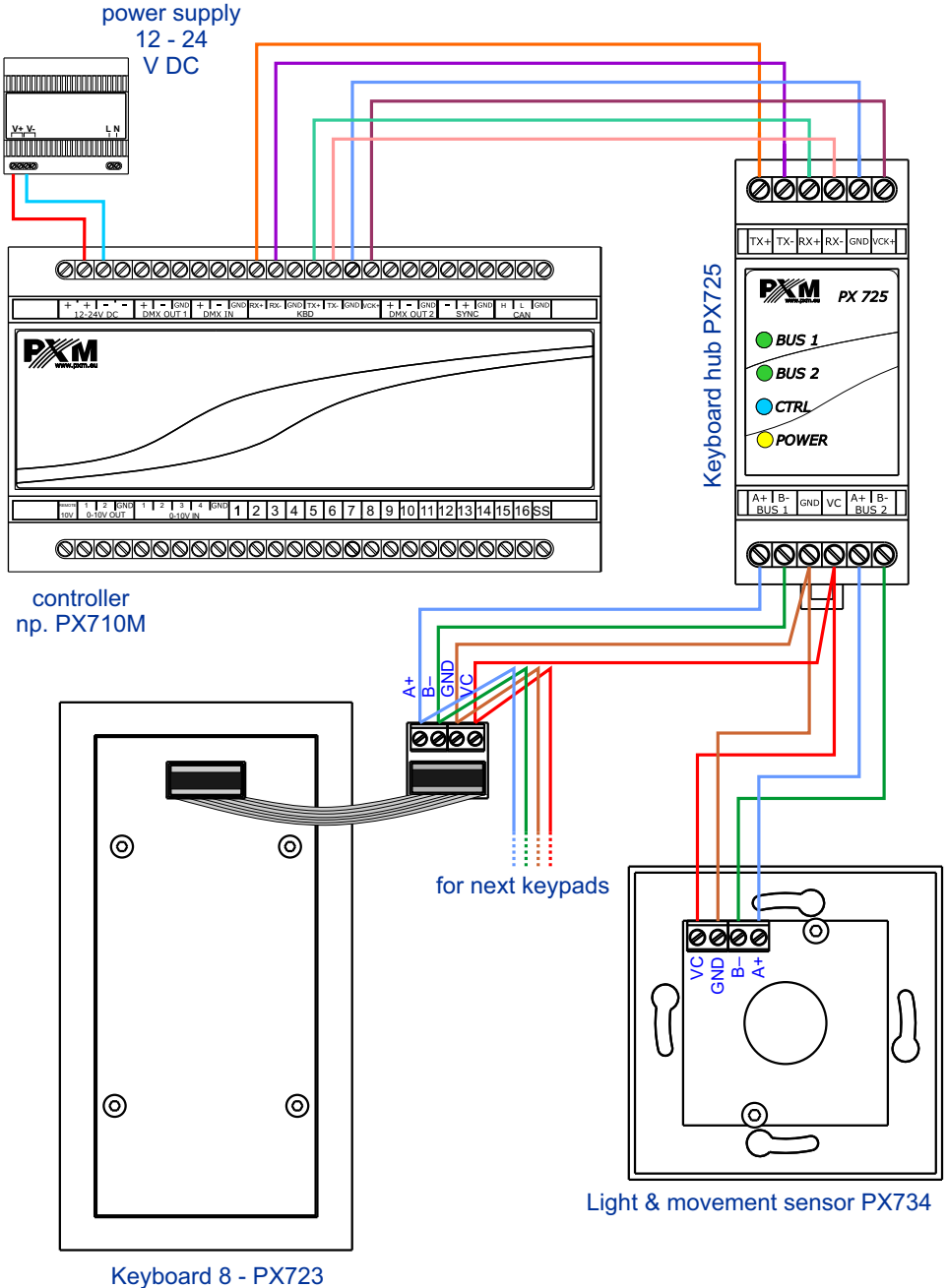
4. DEVICE OPERATION

Owing to the keypad PX723, we can expand the operation of the system by eight additional digital inputs and eight LED diodes which are programmed with the use of the PxDesigner application. Each button generates two events in the controller: from turning on and from turning off. The button can also be defined as “repetitive” – then pressing it longer will generate the event from turning on every defined interval of time.

Next to each button there is a LED indicator for which one of 4 levels of brightness can be set. The indicators can be in two states: ON and OFF as well as two modes of blinking: fast and slow. Pressing the button is signalled with the short acoustic signal. One of 3 levels of loudness can be set or the sound can be completely turned off.

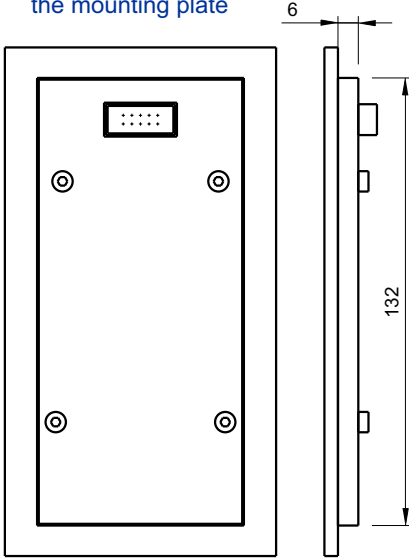
The indicators of the keypad will flash once after turning power on.

5. CONNECTION SCHEME

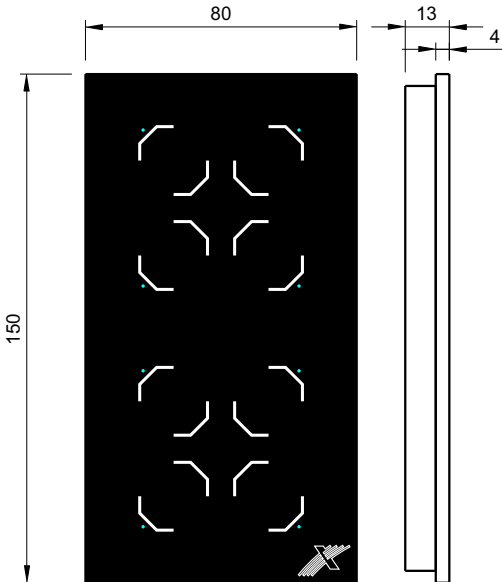


6. DIMENSIONS

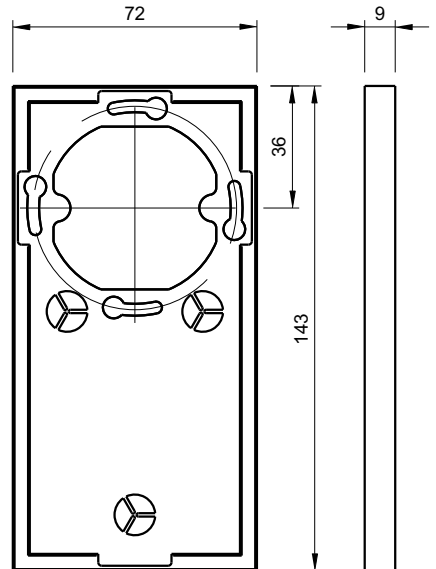
drawing of the keypad without the mounting plate



drawing of the keypad with the mounting plate

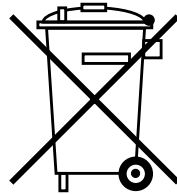


drawing the mounting plate



7. TECHNICAL DATA

Number of the buttons:	8
LED diodes:	8
Cooperation with the controllers:	with the use of PX725 Keyboard Hub
Method of communication with the controller:	PX710M, PX340
Maximum number of the devices:	64 (max. 32 for one line PX725)
Method of programming:	with the use of PxDesigner
Weight:	0,26 kg
Dimensions:	Width: 80 mm Height: 150 mm Depth: 13 mm





Podłęże 654
32-003 Podłęże

tel: 012 385 83 06
fax: 012 626 46 94

e-mail: info@pxm.pl
http://www.pxm.pl

DECLARATION OF CONFORMITY

PXM Marek Żupnik spółka komandytowa
Podłęże 654, 32-003 Podłęże

declares under our sole responsibility that the product:

Name of product: **Keyboard 8**
Type: **PX 723**

compiles with the following standards and harmonized standards:

PN-EN 50581:2013-03,	EN 50581:2012
PN-EN 61000-4-2:2011,	EN 61000-4-2:2009
PN-EN 61000-6-1:2008,	EN 61000-6-1:2007
PN-EN 61000-6-3:2008,	EN 61000-6-3:2007

and is in conformity with the provisions of the following EC Directives:

2011/65/UE DIRECTIVE OF THE EUROPEAN PARLIAMENT AND OF THE COUNCIL of 8 June 2011 on the restriction of the use of certain hazardous substances in electrical and electronic equipment Text with EEA relevance.

2014/30/UE DIRECTIVE OF THE EUROPEAN PARLIAMENT AND OF THE COUNCIL of 26 February 2014 on the harmonisation of the laws of the Member States relating to electromagnetic compatibility (recast) Text with EEA relevance.



Marek Żupnik spółka komandytowa
32-003 Podłęże, Podłęże 654
NIP 677-002-54-53

Podłęże, 06.03.2018

mgr inż. Marek Żupnik.