



Device description

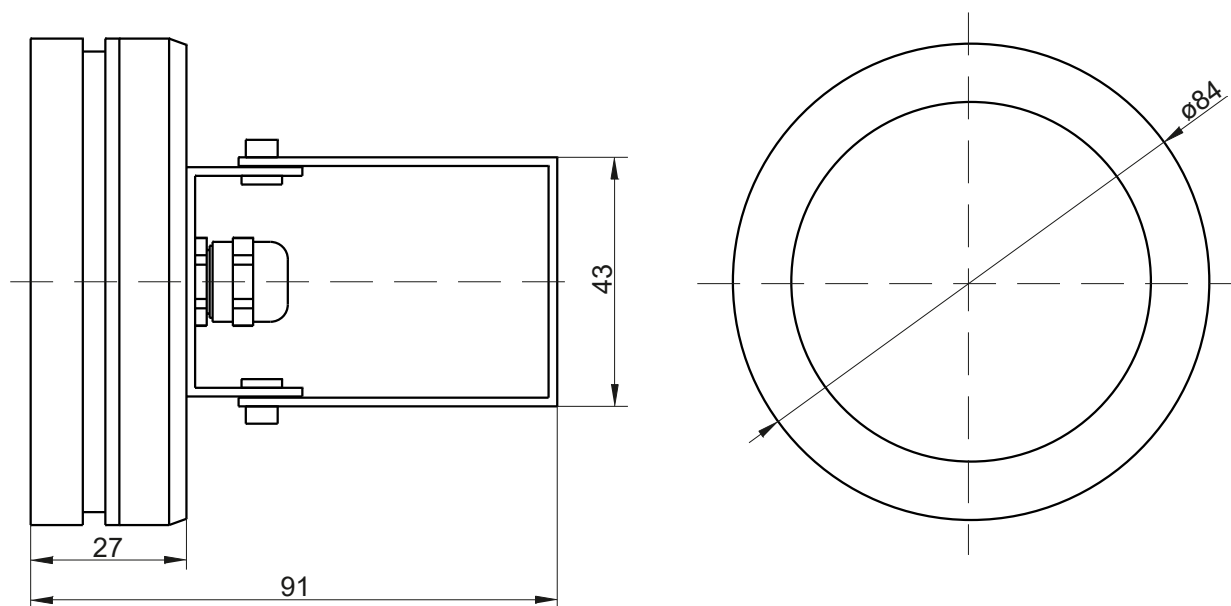
PxAqua 6 SH 12 – 24V lamp is designed for underwater lighting. It can also be used to illuminate the interior and exterior architectural details.

The lamp uses six high-power LED from OSRAM Oslon®. The LEDs are available in different color temperatures: 2700K, 3000K, 4000K, 5000K, 6500K. The lamp may be provided with optics of lighting beam angles: 10°, 25° (standard) or 50°. The housing is made of acid-resistant stainless steel (316L), which also provides IP68 tightness class.

The lamp can be powered with 12 – 24V DC. To power it, use a voltage driver or voltage power supply. In case of using a voltage driver (e.g. PX254, PX282 or PX370) it is possible for dimming the PX373.

The device is provided with a 2m cable.

Technical drawing



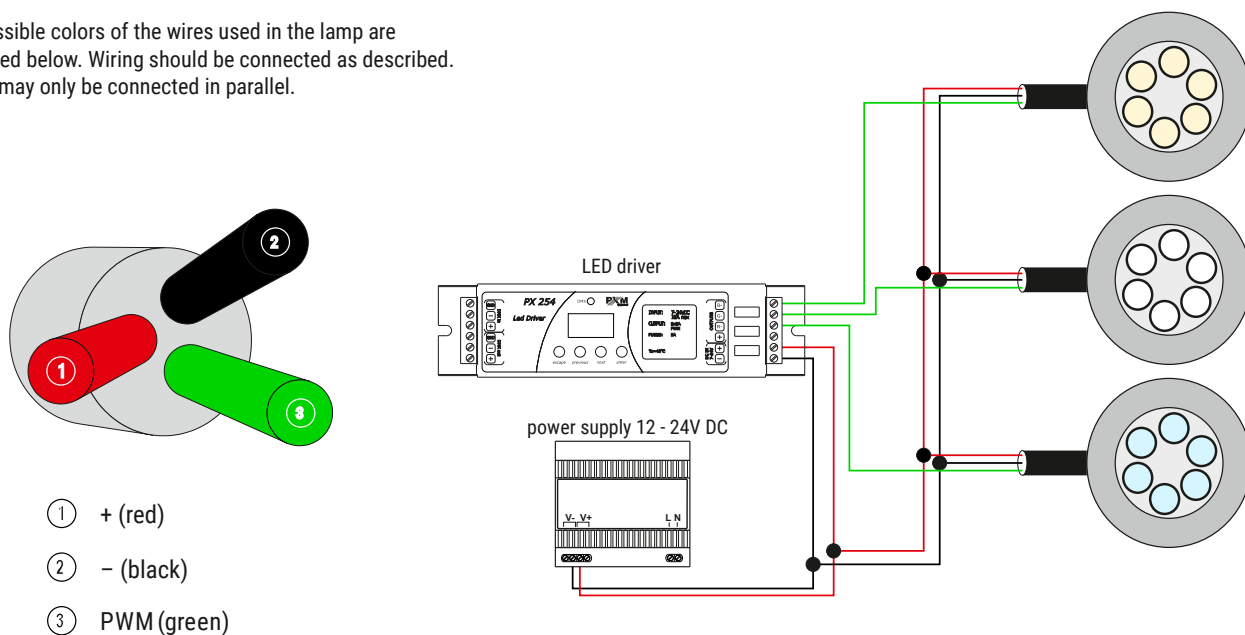
Note!!!

When installing the lamp, be sure of leaving enough space for cable gland, from which comes out the power cord.

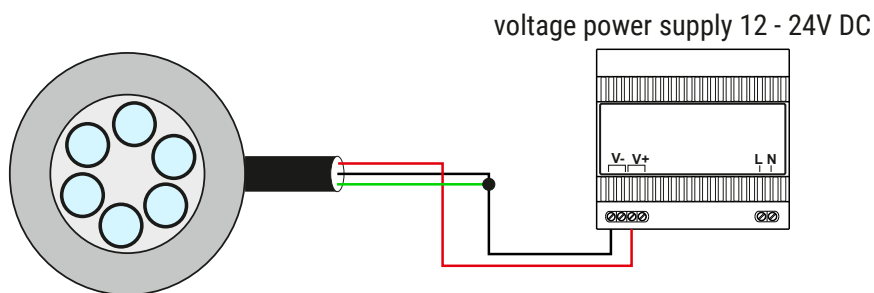
Connection diagram

a) diagram of connecting the lamps with driver

The possible colors of the wires used in the lamp are presented below. Wiring should be connected as described. Lamps may only be connected in parallel.



b) diagram of connecting the lamp with voltage power supply



Technical data

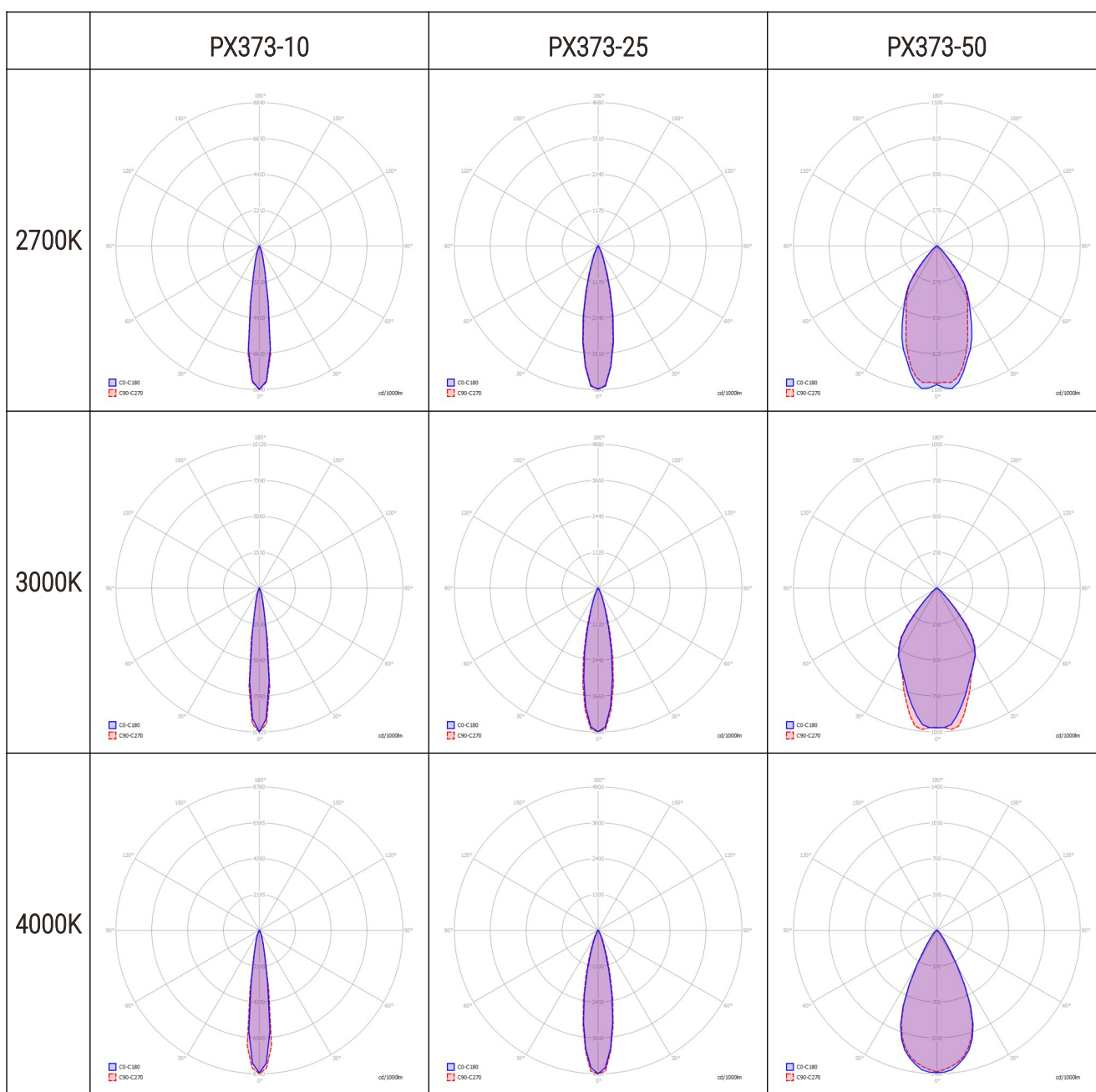
type	PX373
power supply	12 – 24V DC
power consumption	max. 8W
number of LEDs	6
IP rate	IP68
CRI	≥80
lenses	10°*, 25°, 50°*
LED colors	2700K, 3000K, 4000K, 5000K, 6500K
housing	stainless steel (316L)
weight	0.8kg
dimensions	diameter: 84mm heights: 27mm (91mm with the case foot)

* - available on request

Lighting parameters

The table below shows the luminous flux of individual lamps and the lenses and LEDs used in them [lm]:

	2700K	3000K	4000K	5000K
PX373-10	759	607	844	900
PX373-25	707	592	790	784
PX373-50	694	584	716	753



5000K

