

AC+ Dimmer
24 x 3600 W

Device description

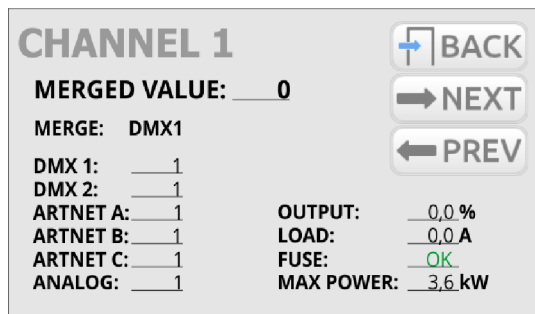
PX314 professional AC class dimmer rated at 24 x 3600 W

PX314 AC+ Dimmer 24x 3600 W can be powered by three phases, and has an integrated system fully protecting against the effects of reverse phases connection.

The device allows you to control 24 independent channels with a power of 3.6 kW each. The dimmer enables you to control input signals from 6 different sources simultaneously, including:

- 2 DMX-512 lines,
- 3 Art-Net lines,
- 24 analogue inputs (option available to order).

The device has a colour touch screen, four buttons and a knob, which allow for navigating through an intuitive menu and setting all parameters of the dimmer as well as viewing its status.



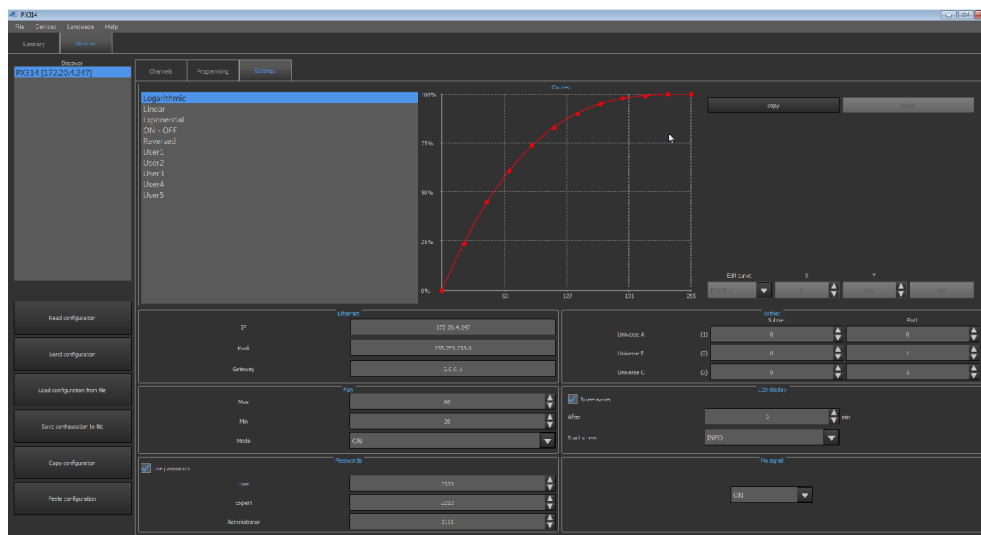
The device has a built-in merger system with an option to select one of 13 priorities, including permanent activation of any circuit, regardless of the controls. The advanced electronics allows you to address each output channel in any way, to select and edit the driving characteristics (5 factory characteristics, 5 user's characteristics), and to set limits for voltage and output current for each channel individually.

The device is equipped with the bulb heating system (10 levels) and control of the attached fuse and broken circuit / burnt bulb. In addition, the user can define the dimmer response to the lack of the driving signal. In addition to the basic options (ON, OFF, HOLD, SLOW TURN OFF), 64 stages and the program are available to be defined.

The integrated "PLL", "soft-start", "soft-on" and "even-off" systems assure reliable operation in the most extreme conditions. Direct detection of zero of the network and optical insulation of DMX input guarantee high resistance to interference.

PX314 has a solid metal housing with an efficient cooling system, adapted for wall mounting.

The device includes software for PCs which enables connecting a maximum of 16 dimmers at the same time. The application allows for viewing current parameters and particular channels of the device, and changing the configuration.



Versions on request

Custom-made version on request

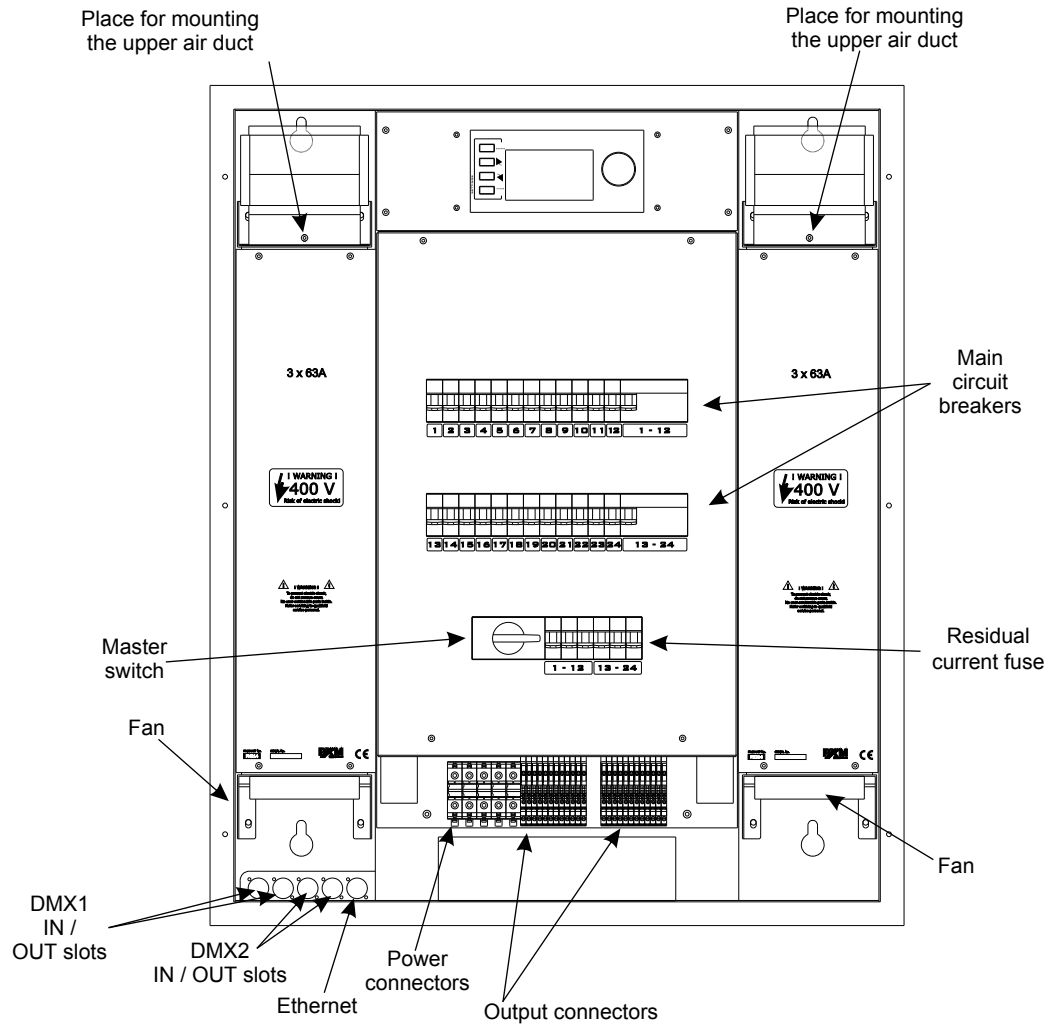
- it is possible to order the product in the following versions: 12x3600W or 24x3600W,
- 24 analogue inputs,
- additional PX387 SwitchDimm DMX Controller module, which allows for smooth control of the circuits or in the "on/off" mode with a dedicated smartphone application (Android™)



Technical data

Type:	PX314		
DMX lines:	2		
Art-Net Univers:	3		
Optically insulated DMX line:	yes		
Circuit break detection:	yes		
Overvoltage protection:	yes		
Output carrying capacity:	24 x 3600 W continuous resistive load 24 x 2400 VA continuous inductive load (conventional and neon transformers)		
Output protection:	full electronic protection + automatic 16 A fuses		
Built-in master switch:	yes		
Fans:	electronic control		
Input slots:	35 mm ² terminals		
Output slots:	4 mm ² terminals		
Power supply:	3 x 230 V / 40 - 70 Hz		
Current consumption:	3 x 128 A (at full load)		
Weight:	70 kg		
Dimensions:	Width: 760 mm Height: 920 mm Depth: 172 mm		
		Faulty circuit control:	yes
		Residual current protection:	yes (the ability to protect each circuit individually)
		Continuous measurement:	- voltage and voltage frequency - current each channel
		Built-in systems:	soft-start, soft-on, even-off
		Number of characteristics:	10 (5 programmable)
		Resolution of control:	1 or 2 bytes
		Touch Screen resolution:	480x272 (4,3")
		Menu operation:	4 buttons + knob
		Preheat:	yes
		Outputs merge:	yes (13 priorities)
		Output power limiter	yes
		Attenuation:	according to standard PN-EN 55014 (according to old standards: rise time > 240 us)

Connection diagram



Dimensions - technical drawing

