

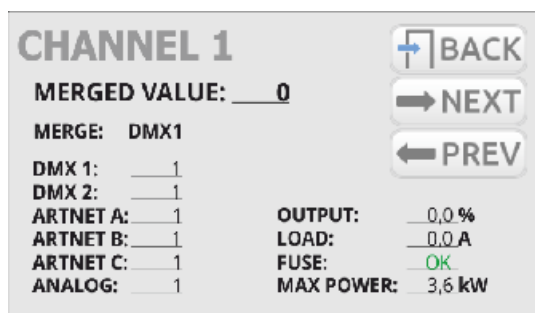
Device description

PX314 is a professional AC class dimmer rated at 24 x 3600W.

AC+ Dimmer 24 x 3600W can be powered by three phases, and has an integrated system fully protecting against the effects of reverse phases connection. The device allows you control 24 independent channels with a power of 3.5kW each. The dimmer enables to control input signals from 6 different sources simultaneously, including:

- 2 x DMX-512 lines
- 3 x Art-Net lines
- 24 x analogue inputs (option available to order)

The device has a color touch screen, four buttons and a knob, which allow for navigating through an intuitive menu and setting all parameters of the dimmer as well as viewing its status.



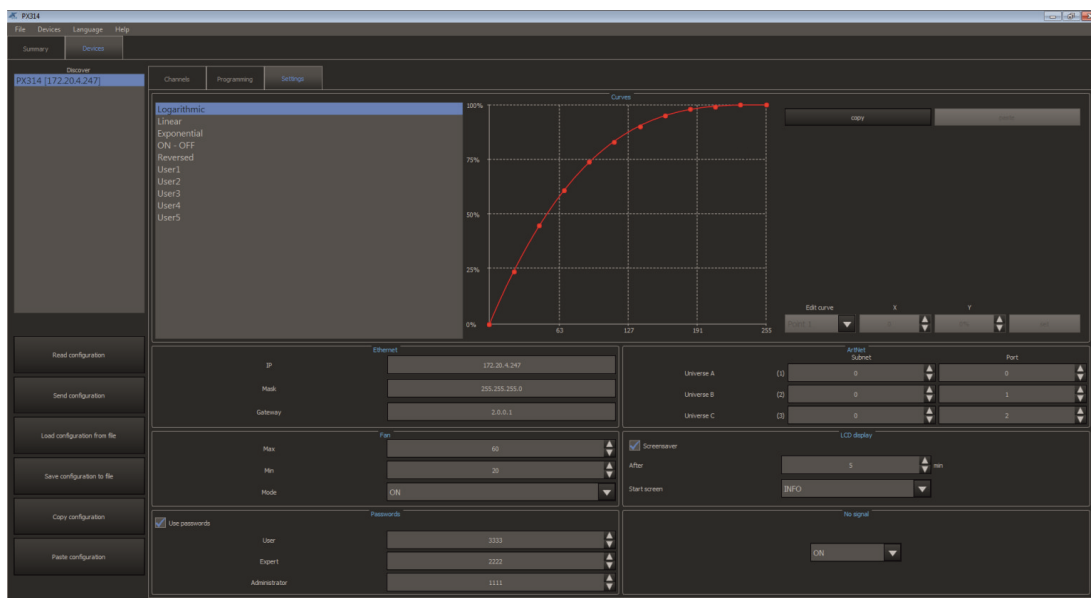
The device has a built-in merger system with an option to select one of 13 priorities, including permanent activation of any circuit, regardless of the controls. The advanced electronics allows to address each output channel in any way, to select and edit the driving characteristics (5 factory characteristics, 5 user's characteristics), and to set limits for voltage and output current for each channel individually.

The device is equipped with the bulb heating system (10 levels) and control of the attached fuse and broken circuit / burnt bulb. In addition, the user can define the dimmer response to the lack of the driving signal. In addition to the basis options (*ON*, *OFF*, *HOLD*, *SLOW TURN OFF*), 64 stages and the program are available to be defined.

The integrated "soft-start", "soft-on" and "even-off" systems assure reliable operation in the most extreme conditions. Direct detection of zero of the network and optical insulation of DMX input guarantee high resistance to interface.

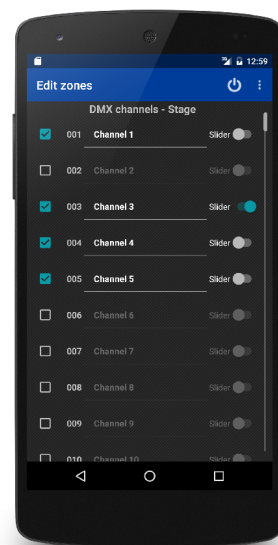
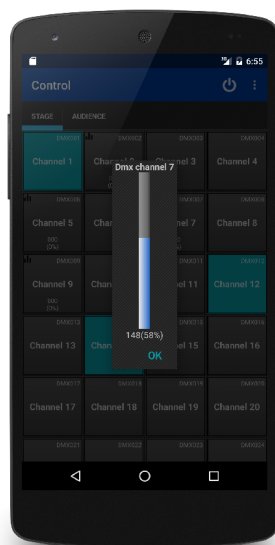
PX314 has a solid metal housing with an efficient cooling system, adapted for wall mounting.

The device includes software for PCs which enables connecting a maximum of 16 dimmers at the same time. The application allows for viewing current parameters and particular channels of the device, and changing the configuration.

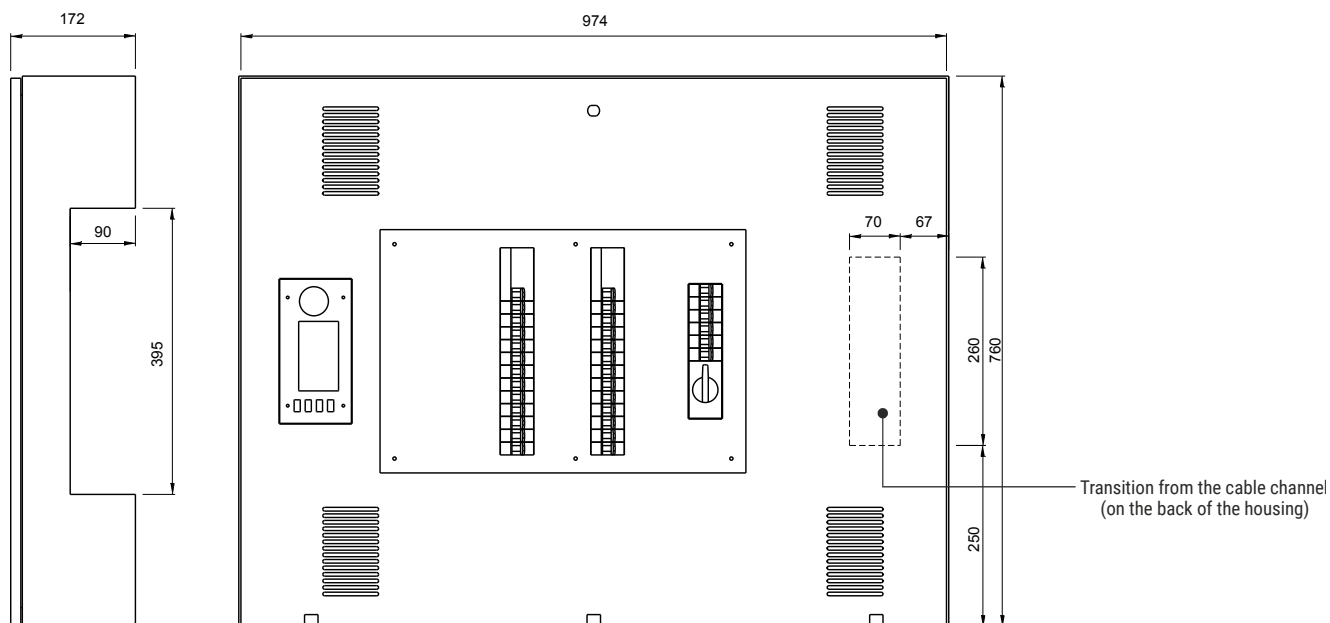


Versions on request

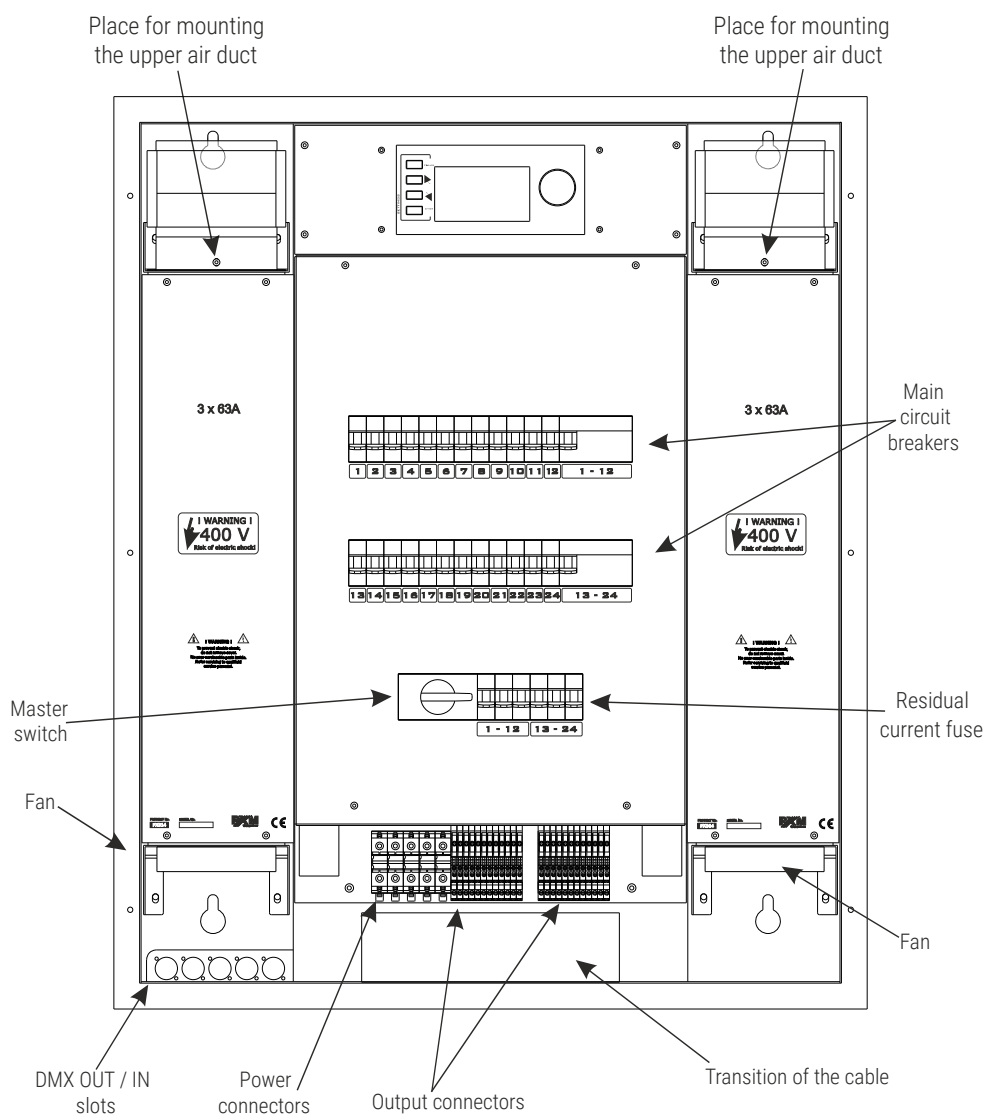
- it is possible to order the product in the following versions: 12 x 3600W or 24 x 3600W
- 24 analogue inputs
- additional PX387 SwitchDimm DMX Controller module, which allows for smooth control of the circuits or in the "on / off" mode with a dedicated smartphone application (with Android™)



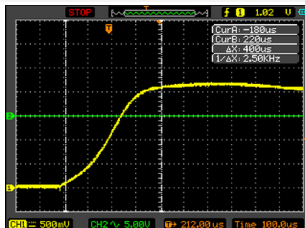
Technical drawing



Connection diagram



Technical data

type	PX314
DMX lines	2
Art-Net Universe	3
optically insulated DMX line	yes
circuit break detection	yes
overvoltage protection	yes
faulty circuit control	yes
residual current protection	yes (the ability to protect each circuit individually)
continuous measurement	voltage and voltage frequency of the current of each channel
built-in systems	soft-start, soft-on, even-off
number of characteristics	10 (5 programmable)
resolution of control	1 or 2 bytes
Touch Screen resolution	480 x 272px (4,3")
menu operation	4 buttons + knob
preheat	yes
output merge	yes (13 priorities)
output power limiter	yes
attenuation	according to standard PN-EN 55014
output carrying capacity	 <p>rise time of the suppressor choke: at least 400µs</p>
	<p>24 x 3600W – continuous resistive load 24 x 2400VA – continuous inductive load (conventional and neon transformers)</p>
output protection	full electronic protection + automatic 16A fuses
built-in master switch	yes
fans	electronic control
input slots	35mm ² terminals
output slots	4mm ² terminals

power supply	3 x 230V AC
current consumption	3 x 128A (at full load)
weight	70kg
dimensions	width: 760mm height: 974mm depth: 172mm

"Art-Net™ Designed by and Copyright Artistic Licence Holdings Ltd"



www.pxm.pl
BDO register number 000005972

