



DATA SHEET

PX229-H

PX229-P

PxAqua 3 SH

PxAqua 3 SP

Device description

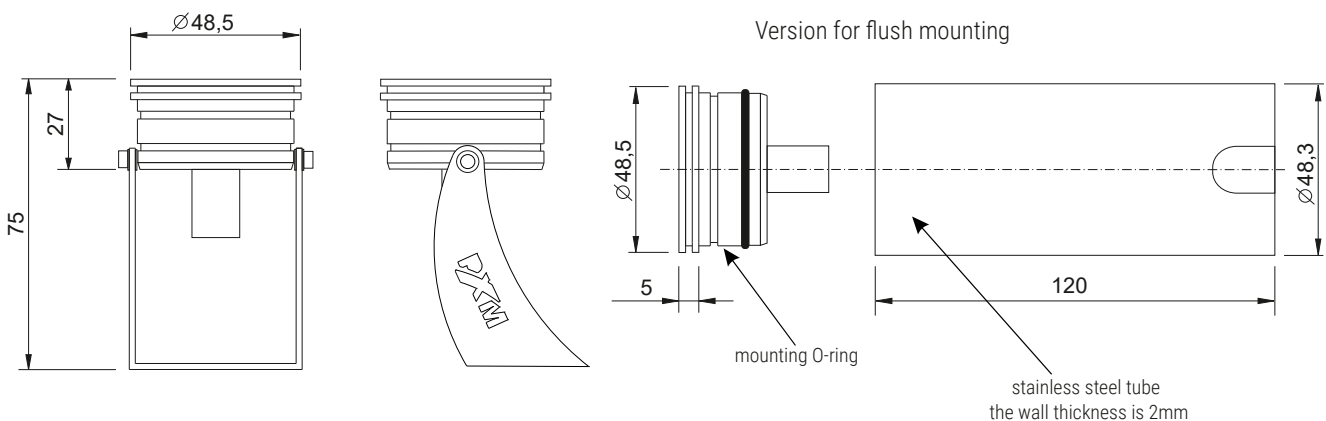
The PxAqua 3 SH / SP LED lamp is designed for underwater lighting. In addition, it can be used to illuminate interiors and architectural details.

The lamp uses three high-performance LEDs Osram Oslon®, which ensures its excellent lighting parameters. It can be equipped with optics with different beam angles (10 °, 25 ° or 45 °). Optionally, the lamp can be equipped with LEDs of other colors than typical RGB (e.g. white – WNC). The PX229 is based on a 350mA power supply, however, optionally in underwater applications, the lamp can work with a 700mA power supply, then the LEDs get the power of 3 x 3W.

It should be remembered that individual LED drivers can only control a certain number of lamps, depending on the power supply and other technical parameters.

PX229 is produced in a version with a handle (PX229-H) or in a drive-on version (PX229-P) for installation. It is intended both for installation under water, e.g. in fountains, as well as inside and, above all, outside buildings.

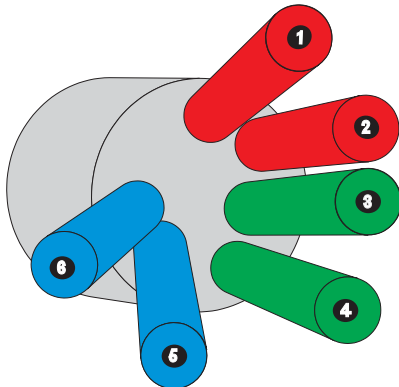
Technical drawing



Connection diagram

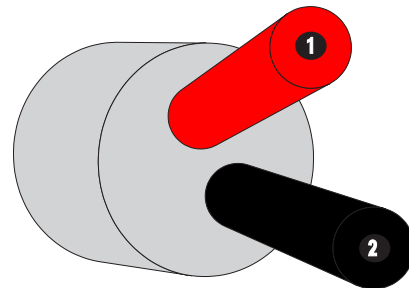
An example of the use of cables for RGB and monochrome lamps. The cables should be connected in the correct color order. For the RGB version, the full blue wire should be connected to the B+ terminal, the blue wire to the B- terminal. Similarly, green (G terminals) and red (R terminals) wires.

For RGB lamps



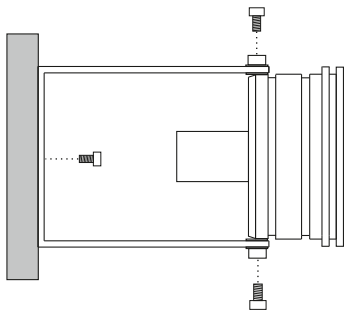
1. **RED -** (red with black stripe)
2. **RED +** (red)
3. **GREEN -** (green with black stripe)
4. **GREEN +** (green)
5. **BLUE -** (blue with black stripe)
6. **BLUE +** (blue)

For monochromatic lamps



1. + (red)
2. - (black)

Method of mounting



The lamp is attached to the holder with two M3 Allen screws and can be rotated vertically. The handle, on the other hand, is attached to the ground with an M5 screw, which in turn allows for rotation in the horizontal plane.

Technical data

type	PX229-H – version with a handle PX229-P – overrun version (for installation in a pipe)
power supply	for RGB version: 3 x 350mA or 3 x 700mA underwater version for monochrome version: 1 x 350mA or 1 x 700mA underwater version
IP rate	IP68
beam angles	25° (10° / 45° – on request)
available LED colors	2700K, 3000K, 4000K, 5000K, 6500K, RGB
brightness (25° distance 1m)	~1100 lux (white color of the LEDs)
LED colors	16 million (theoretical amount for RGB lamp)
weight	0.35kg
dimensions	height: 75mm diameter: 48,5mm

NOTE! The lamp can be powered from the driver only with current stabilization or from the power supply with current stabilization.